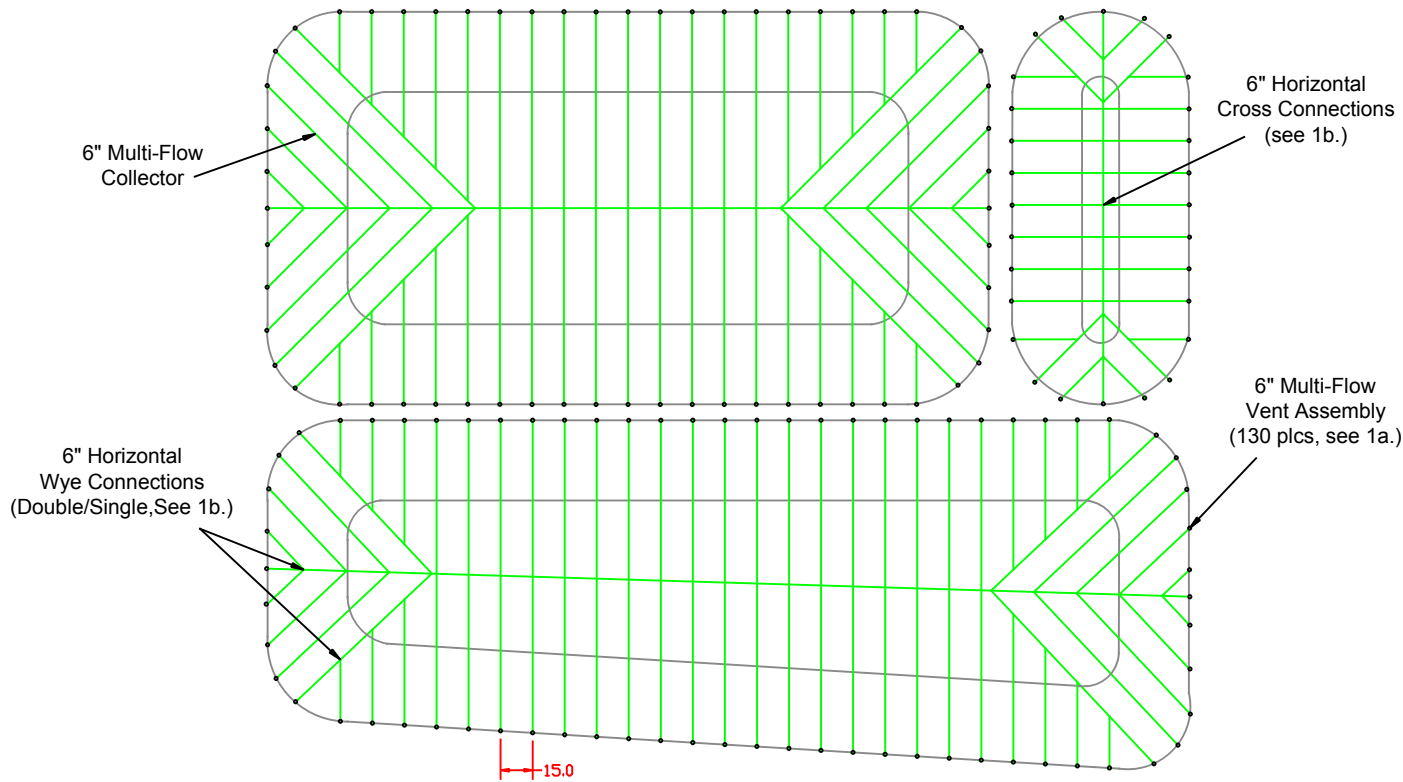


NOTES

Materials:

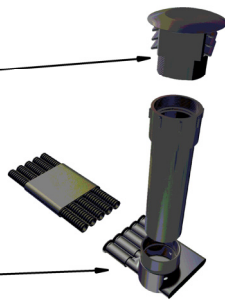
10,805' - 6" Multi-Flow Part# 06000
 72' - 6" Coupler Part #06002
 130 - 6" Multi-Flow Vent Stack to 3" PVC Part #06013
 50 - 6" Horizontal Wye Part #06016
 34 - 6" Horizontal Cross Part #06018



1a Info:

Vent Assembly
#06043

6" Multi-Flow
Collector



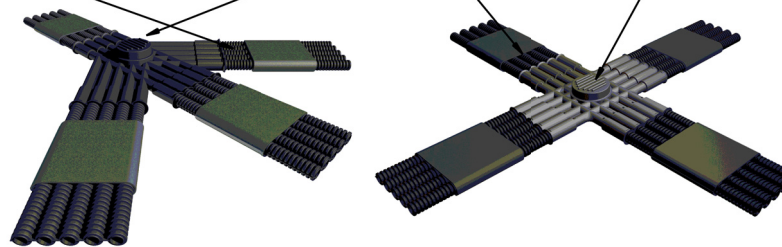
1b Info:

6" Multi-Flow
Collector

6" Horizontal Wye
*Used as a double
or Single Wye
(w/plugs)

6" Multi-Flow
Collector

6" Horizontal Wye
*Potetial future
Drain Outlet



Specific Notes:

*Contained information is for reference only. Not intended for use, as an engineered spec. It is the responsibility of the user to ensure the suitability of Multi-Flow products, for the outlined project.

Line Spacing - System will be comprised of 6" lines on base of pond, under the liner, as per spec, spaced 15 ft. (fitting-to-fitting). Actual spacing may be different, depending on angle.

Transport Connection - The 6" Multi-Flow will NOT connect to a drainage system at this time. One may easily be added in the future. Gas collection/ventilation only.

Connection Points - Multi-Flow Connectors will join together using the appropriate coupler. At each of the coupled locations, it is suggested that a 2" PVC tape be used to secure the geotextile, to the connection.

Performance Data

Collection Area: 480,400 sq ft.

Capacity: No flow capacity
with no

Outlet Capacity: system drains

Project Details

Name: Sample Containment

Author: ATP

Date: 01.01.2016

MULTIFLOW

Multi-Flow is a product of Varicore Technologies, Inc.
US Patent# 4995759